

CANYON ISLES (A.K.A. FOGG CENTRAL) PLANNED UNIT DEVELOPMENT

CANYON ISLES - PLAT THREE

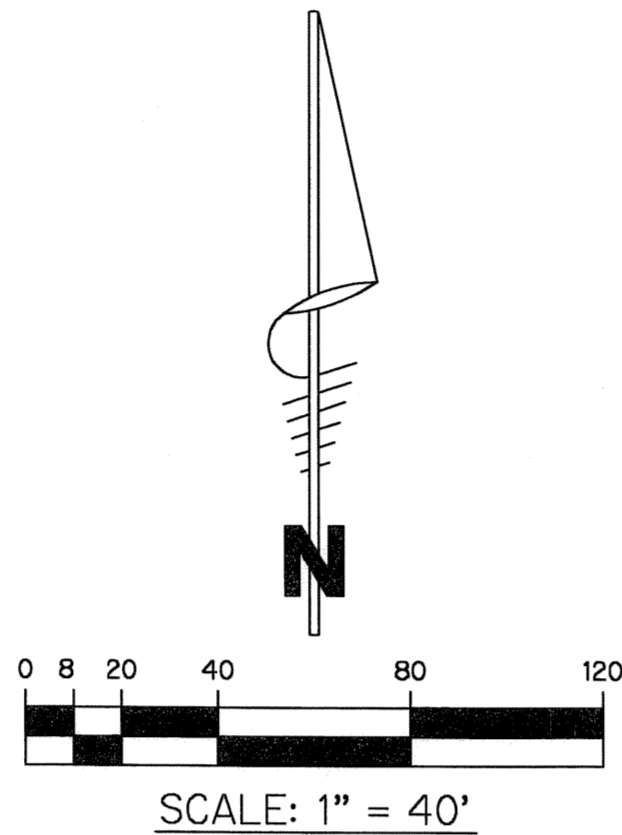
A PARCEL OF LAND IN SECTION 32, TOWNSHIP 45 SOUTH, RANGE 42 EAST, PALM BEACH COUNTY, FLORIDA, BEING A PORTION OF TRACTS 6-10, 23-27, 38-41, AND 56-59, BLOCK 59, PALM BEACH FARMS Co. PLAT No.3, RECORDED IN PLAT BOOK 2, PAGE 45, OF THE PUBLIC RECORDS OF PALM BEACH COUNTY, FLORIDA

SHEET 9 OF 9 JULY, 2004

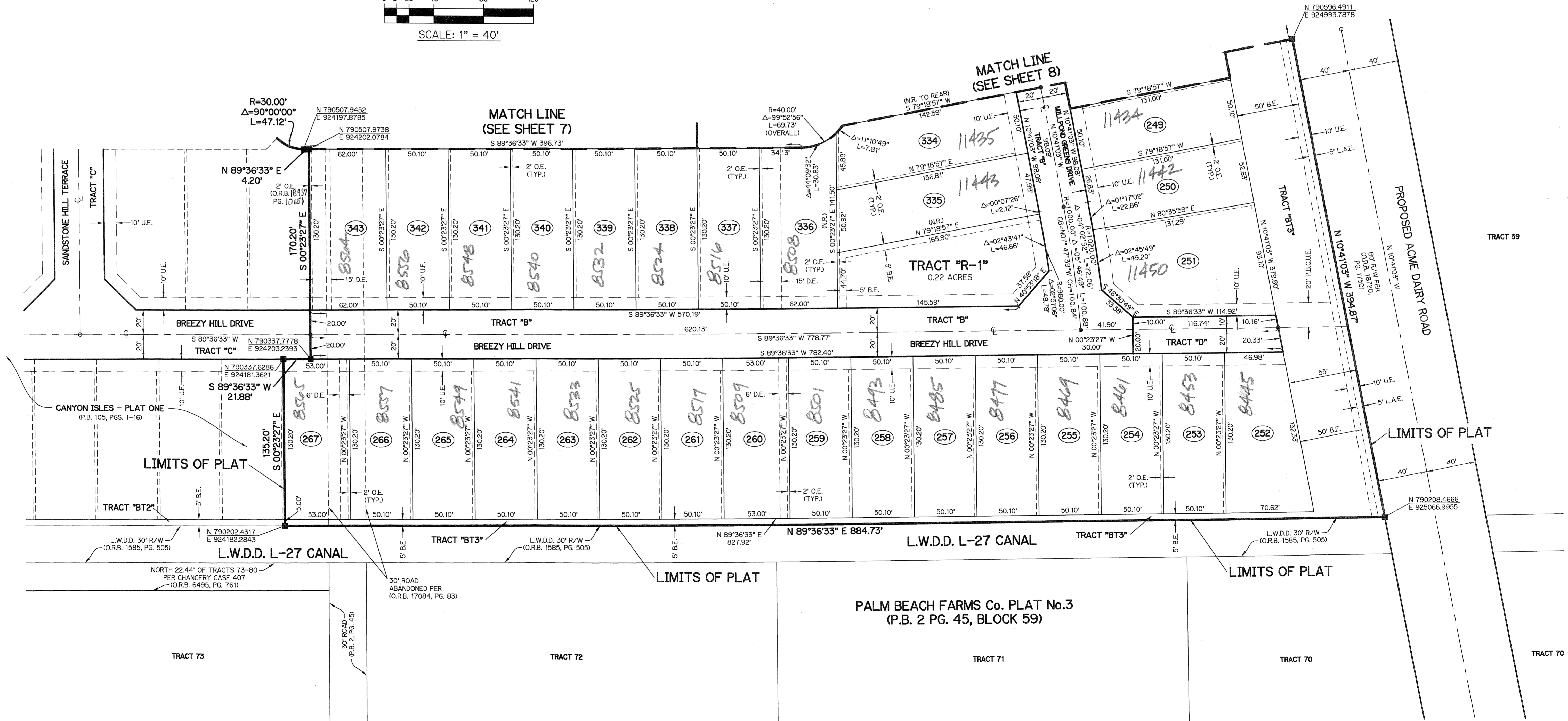
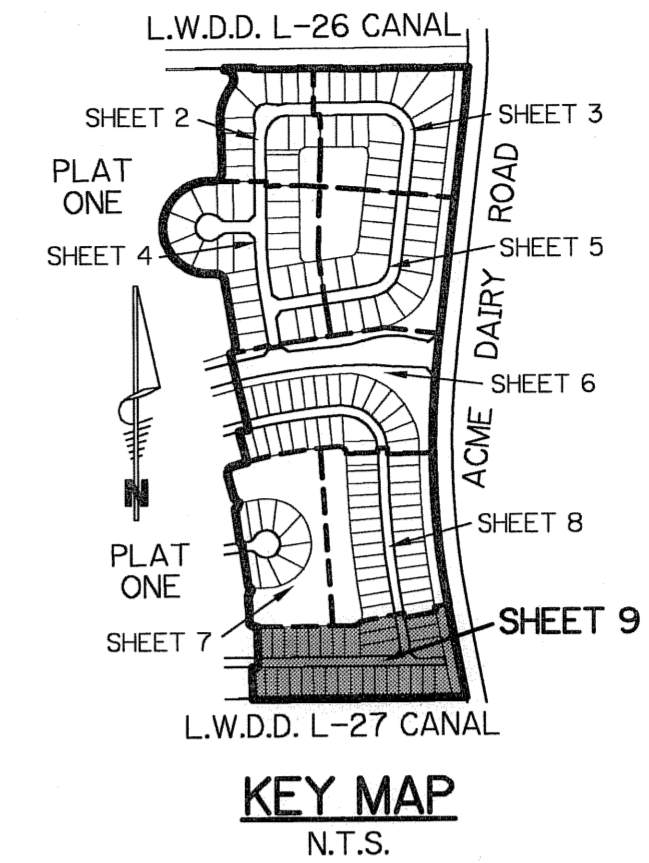
69

LEGEND:

- - SET PERMANENT REFERENCE MONUMENT, L.B. #6473
- - FOUND PERMANENT REFERENCE MONUMENT, L.B. #6473
- - SET PERMANENT CONTROL POINT, L.B. #6473
- - FOUND PERMANENT CONTROL POINT, L.B. #6473
- Δ - DELTA ANGLE
- B.E. - BUFFER EASEMENT
- CB - CHORD BEARING
- CH - CHORD DISTANCE
- C - CENTERLINE
- D.B. - DEED BOOK
- D.E. - DRAINAGE EASEMENT
- L - ARC LENGTH
- L.A.E. - LIMITED ACCESS EASEMENT
- L.M.A.E. - LAKE MAINTENANCE ACCESS EASEMENT
- L.M.E. - LAKE MAINTENANCE EASEMENT
- L.W.D.D. - LAKE WORTH DRAINAGE DISTRICT
- N.R. - NOT RADIAL
- N.T.S. - NOT TO SCALE
- O.R.B. - OFFICIAL RECORD BOOK
- O.E. - OVERHANG EASEMENT
- P.B. - PLAT BOOK
- P.C.P. - PERMANENT CONTROL POINT
- P.S. - PAGES
- P.O.B. - POINT OF BEGINNING
- P.O.C. - POINT OF COMMENCEMENT
- P.S.M. - PROFESSIONAL SURVEYOR AND MAPPER
- R - RADIUS
- R/W - RIGHT-OF-WAY
- U.E. - UTILITY EASEMENT



BROWN & PHILLIPS, INC.
 CERTIFICATE OF AUTHORIZATION # LB 6473
 3969 N. HAVERHILL ROAD, SUITE 105
 WEST PALM BEACH, FLORIDA 33417
 561-615-3988, 561-615-3986 FAX



SUBDIVISION CANYON ISLES - PLAT 3
 BOOK 106 PAGE 69 FLOOD MAP # 200 A
 FLOOD ZONE B ZONING PDD
 QUAD # 50 SE
 TAZ 750
 PUD NAME FOGG CENTRAL

PALM BEACH FARMS Co. PLAT No.3
 (P.B. 2 PG. 45, BLOCK 59)